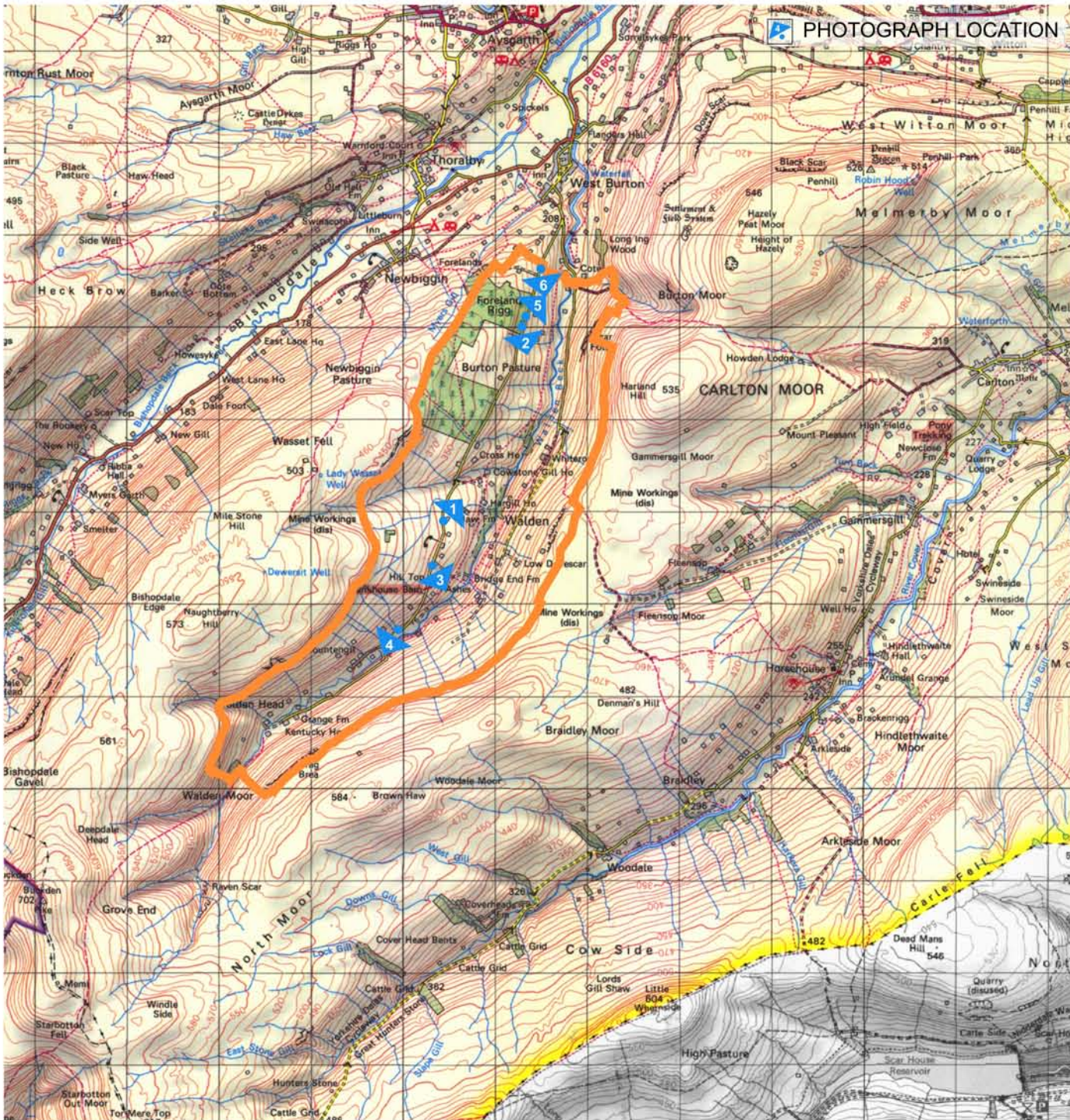
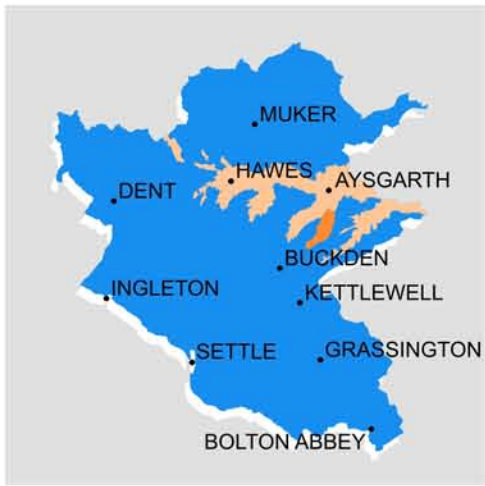


**YORKSHIRE DALES NATIONAL PARK**



**KEY CHARACTERISTICS**

- Narrow fluvial v-shaped valley, overlying Great Scar limestone and with valley sides formed by rocks of the Yoredale series, which widens out to a u-shaped profile towards the head of the dale.
- Gently undulating, stepped valley sides extending down to the river until over halfway along the dale where valley floor widens out.
- Stepped bands of outcropping rock and associated scree forms part of the valley slope terraces. Dove Scar is a dominant focal point.
- River is not visible at first due to topography but becomes an important feature where valley floor widens, with visible stony, shallow channel, stony beaches and low grassy banks. Areas of dry riverbed present towards the head of the dale.
- Many tributary gills giving a folded appearance to the valley side although not easily discernible due to very little associated tree cover.
- Visually prominent, large coniferous plantation situated at the northern end of the dale high up on the valley side contrasts with other clumps of broad-leaved woodland situated mainly adjacent to the river and on lower valley slopes.
- Scattered farmhouses and cottages in long house or laithe style, mainly situated adjacent to the road, or river, on the lower valley slopes, or valley floor. Some evidence of modernisation and conversion to holiday cottages.
- Drystone walls form a strong pattern particularly where v-shape profile is more pronounced, forming significant parallel lines down the slopes petering out where the valley widens towards the dale head. Occasional scattered barns mainly built into walls or on field boundaries.
- Predominantly improved pasture with a small concentration of hay meadows in the upper dale. Moorland vegetation visible only at crest of valley and more predominantly at the head of the dale.
- Agricultural sheds are major visual detractors situated halfway up valley slope in visually prominent positions.
- Long distance views of elements within Wensleydale are a positive feature, framed by characteristic stepped landform to the north east.

