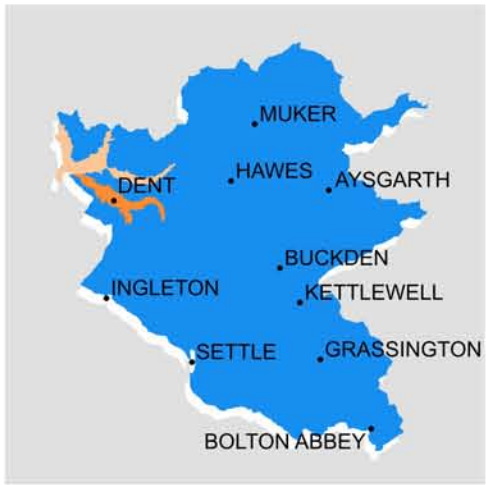


YORKSHIRE DALES NATIONAL PARK



1

KEY CHARACTERISTICS

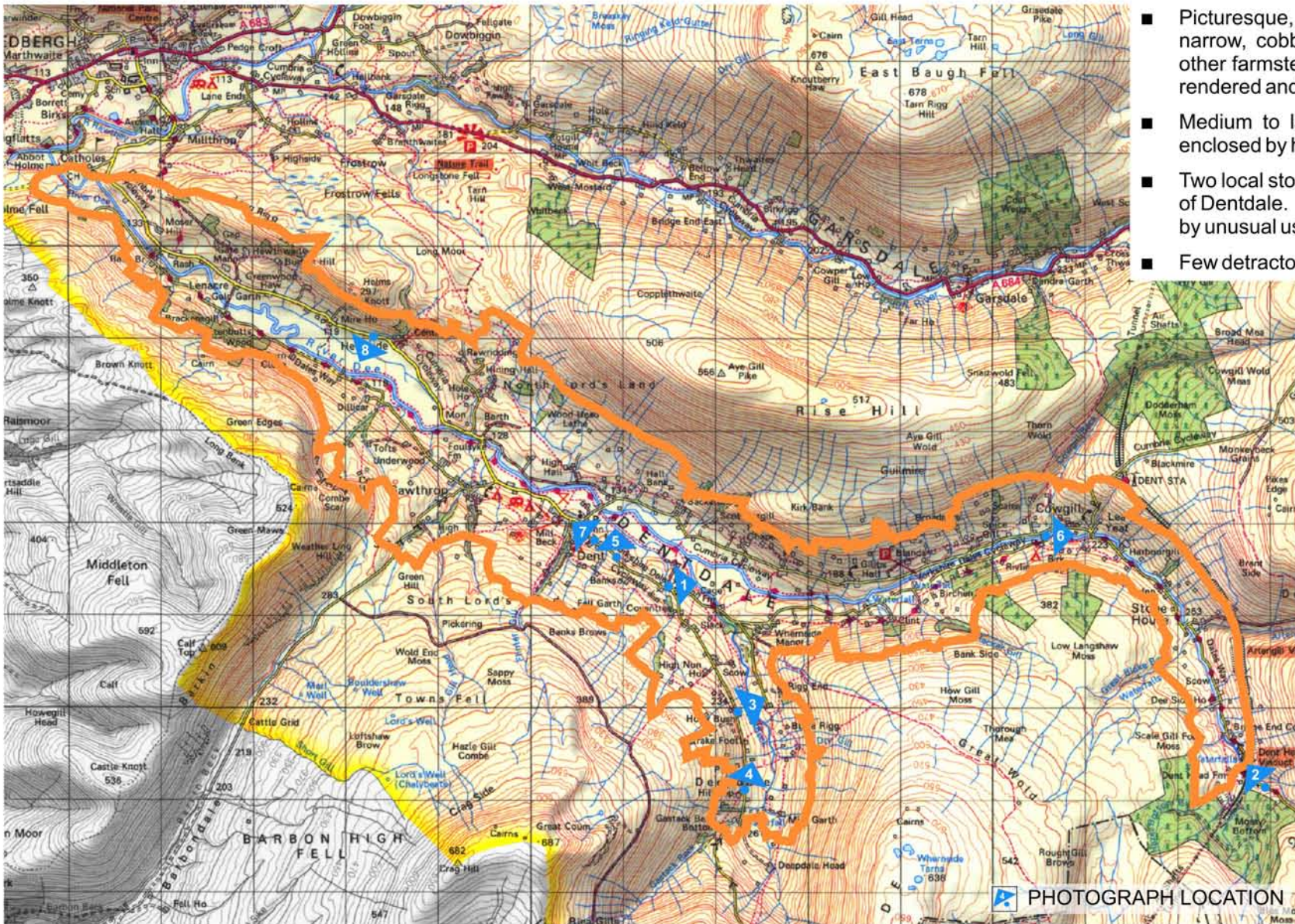
- West facing sinuous, shallow, u-shaped glacial valley located in the north western part of the National Park.
- Crossed by the Dent Fault in the Gawthrop area, the valley overlies Great Scar limestone to the east, with valley sides formed by Yoredales; to the west the valley overlies grey turbidite sandstones and slates of the Silurian period.
- Shallow, gently undulating valley sides with a predominantly narrow valley floor, except to the west of Dent where it widens out significantly, and the valley becomes broader and more open in character.
- Outcropping limestone of Combe Scar and associated corrie below form a prominent feature.
- River has a smooth, platformed bed with steps or ledges, and extensive tree cover on riverbanks.
- Frequent tributary gills giving valley side a folded, indented appearance, their winding form picked out by abundant tree cover.
- Lush, green, extremely well-wooded valley with linear lines of hedgerows appearing to tumble down the valley sides to connect with densely wooded river banks.
- Picturesque, traditional stone-built village of Dent with narrow, cobbled streets. Many houses within Dent, and other farmsteads scattered throughout the dale, have been rendered and painted white.
- Medium to large sized fields with hay meadows, mainly enclosed by hedgerows and some drystone walls.
- Two local stone viaducts form dominant features at the head of Dentdale. Visual influence of railway slightly exacerbated by unusual use of sleepers as crude fencing.
- Few detractors.



4



5



2



6



7



3



8

4 DENTDALE & DEEPPDALE